

The 2nd version for Japanese-inspired ink imaged Ukiyo-e

Ukiyo-e is a genre of Japanese traditional painting

HIROSHIGE 4 Colors

1 HIROSHIGE-ASAHANADA
(Sky blue)

TFPI-WD42-9

2 HIROSHIGE-RURI
(Lapis lazuli)

TFPI-WD42-10

3 HIROSHIGE
-NAKAMURASAKI
(Red purple)

TFPI-WD42-11

4 HIROSHIGE-AINEZU
(Blue gray)

TFPI-WD42-12



UTAMARO 4 Colors

5 UTAMARO-BENIZAKURA
(Crimson cherry blossom)

TFPI-WD42-13

6 UTAMARO-AOMURASAKI
(Blue purple)

TFPI-WD42-14

7 UTAMARO-USUZUMI
(Light black)

TFPI-WD42-15

8 UTAMARO-UMEMURASAKI
(Plum purple)

TFPI-WD42-16



TACCIA Ink for fountain pen (aqueous dye)
Ukiyo-e Ink II
[40ml per color ¥1,600 plus tax]



Utagawa Hiroshige's art has been highly appreciated by Europe and America not only for the bold composition of the art but also the blue color, especially the beauty of "indigo". This indigo color was the blue pigment which was happened to be found by Germany painter who was trying to create the red pigment. Hiroshige used this indigo color for his work and became a famous painter called as "Hiroshige Blue" abroad and at home.

4 colors of Hiroshige Utagawa



TFPI-WD42-9
HIROSHIGE-ASAHANADA



TFPI-WD42-10
HIROSHIGE-RURI



TFPI-WD42-11
HIROSHIGE-
NAKAMURASAKI



TFPI-WD42-12
HIROSHIGE-AINEZU

4 colors of Utamaro Kitagawa



TFPI-WD42-13
UTAMARO-BENIZAKURA



TFPI-WD42-14
UTAMARO-AOMURASAKI



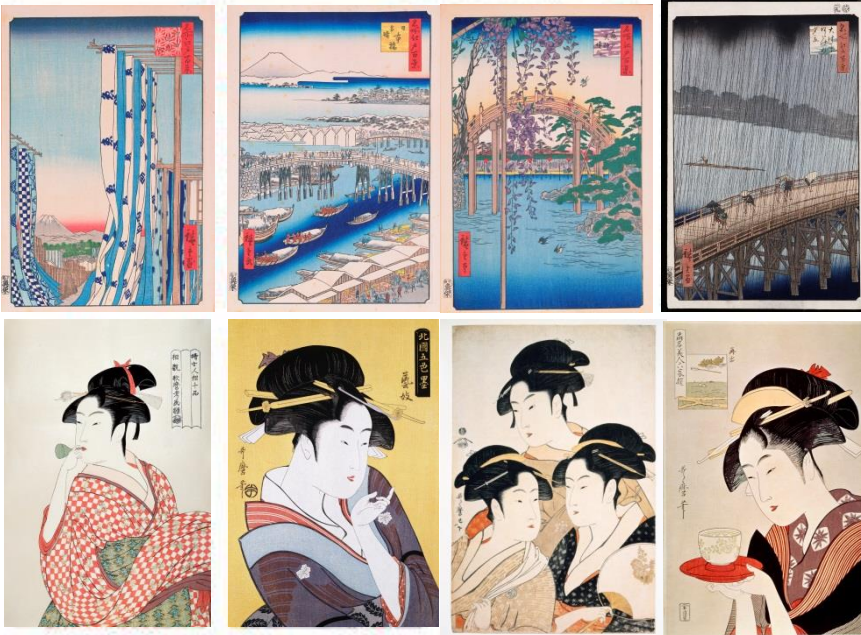
TFPI-WD42-15
UTAMARO-USUZUMI



TFPI-WD42-16
UTAMARO-
UMEMURASAKI

Utamaro created an absolutely new type of female beauty which is featuring delicate and elegant drawing lines, pursuing beauty of various forms and expressions.





The "Edo period" (17 century) where they had shined with their art had been flourished for a long time and the culture had developed.

Please take our Ukiyo-e ink series and try it by imagining such a colorful time

Producer & Color Supervisor



Produced by
Stationerysommelier
Hiroshi Ishizu

Supervised by
Color consultant
Hanae Matsumoto

歌川広重4色

	広重浅緑 HIROSHIGE ASAHAMA		永 Fountain pen ink	Sky blue/TFPI-WD42-9
	広重瑠璃 HIROSHIGE RURI		永 Fountain pen ink	Lapis lazuli/TFPI-WD42-10
	広重中紫 HIROSHIGE NAKAMURASAKI		永 Fountain pen ink	Red purple/TFPI-WD42-11
	広重藍鼠 HIROSHIGE AINEZU		永 Fountain pen ink	Blue gray/TFPI-WD42-12

喜多川歌麿4色

	歌麿紅桜 UTAMARO BENIZAKURA		永 Fountain pen ink	Crimson cherry blossom/TFPI-WD42-13
	歌麿青紫 UTAMARO AOMURASAKI		永 Fountain pen ink	Blue purple/TFPI-WD42-14
	歌麿薄墨 UTAMARO USUZUMI		永 Fountain pen ink	Light black/TFPI-WD42-15
	歌麿梅紫 UTAMARO UMEMURASAKI		永 Fountain pen ink	Plum purple/TFPI-WD42-16

For our Ukiyo-e ink 1st version dealt with Hokusai (Hokusai Katsushika) who had left the masterpiece of Ukiyo-e art for landscape and Sharaku (Sharaku Toshusai) who had painted many famous Ukiyo-e art for stage actor, our 2nd version has been released for another two great Ukiyo-e painters, Hiroshige and Utamaro.

Hiroshige (Hiroshige Utagawa) has drawn many arts in the motif of flower, bird, vegetation, insect etc.

Utamaro (Utamaro Kitagawa) has specialized in the art of "beautiful women". This time, we recreated the colors which they used to use for their arts and utilized their masterpiece works for the packages of our inks.

Fountain pen ink/aqueous dye
Ukiyo-e ink (Hiroshige, Utamaro)

TFPI-WD42

Ink: aqueous dye / 40ml
Bottle: glass, Lid: Phenolic resin,
Gasket: PE
W42xD42xH68mm
Package: coated cardboard
W71.5xD71.5xH74.5mm